



**GREAT LAKES DREDGE & DOCK
COMPANY**

2021



SAFETY without compromise

Safe Operations in the COVID-19 Pandemic

Great Lakes Dredge & Dock Company's strong Incident and Injury Free® (IIF®) culture and safe work environment provided a solid foundation for us to respond quickly and effectively to the COVID-19 pandemic and the challenges it presented in 2020. Our Leadership Team promptly established a Command Call structure and developed COVID-19 Response Plan protocols to ensure the safety of our project teams, vessel crews, and headquarters personnel. As an essential service, dredging operations were needed to maintain the nation's maritime infrastructure.

While a few project teams and vessel crews have been impacted by COVID-19 positive cases, the care and concern that underlie our IIF® culture are a driving force in mitigating these situations.

Great Lakes is proud that despite the many changes and challenges the pandemic has brought to our work environment, our 2020 safety performance has remained strong and at similar incident rates to the previous year's historically low numbers.

A special thanks to our project teams, vessel crews, and maintenance personnel who implemented our COVID-19 protocols, found new ways to complete their tasks, extended their rotations, and pushed through this pandemic to ensure safe dredging operations in 2020.

Great Lakes has successfully adapted to an extraordinary situation, finding ways to work efficiently and effectively whether remotely or on the front lines. Our IIF® journey never stops and WE grow stronger each year – driving down our lagging numbers, improving our leading indicators, improving pipeline operations to reduce risks of man overboards, and safely executing the challenging projects that separate Great Lakes from our competitors.

Lasse Petterson, CEO & President

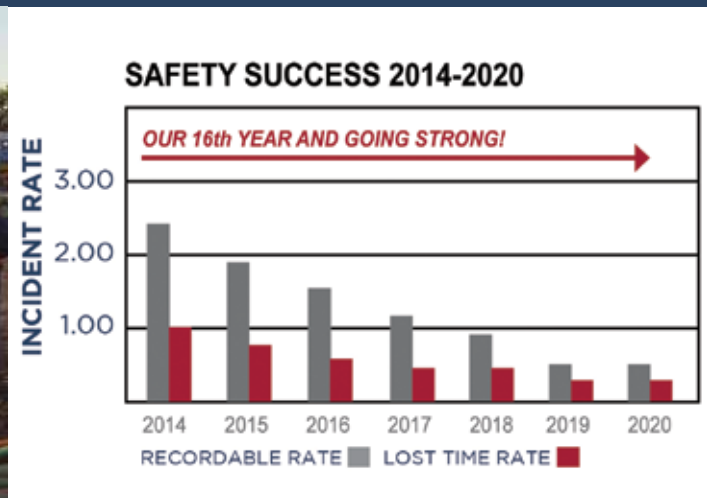
David Simonelli, COO

Our commitment to IIF® culture has resulted so far in at least 1,800 fewer incidents at Great Lakes, and has positively impacted our business partners, families & friends.

Front Cover photo:
Dredges Terrapin Island,
Padre Island, Liberty Island,
and Dodge Island at
York Spit Channel, VA.
photo: Aerophoto America



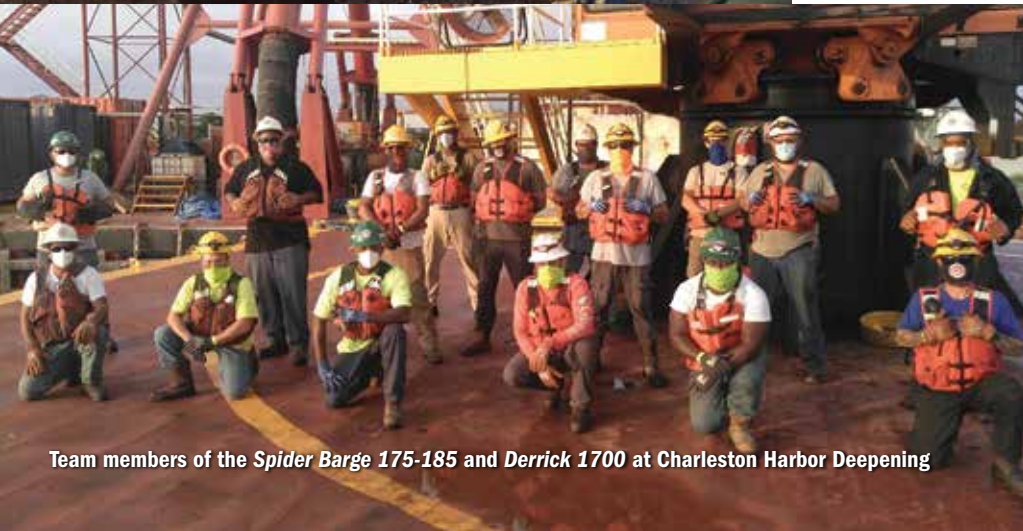
Team members on location at Sandbridge, VA



Temperature checks on location at Emerald Isle



Temperature checks aboard the Dodge Island



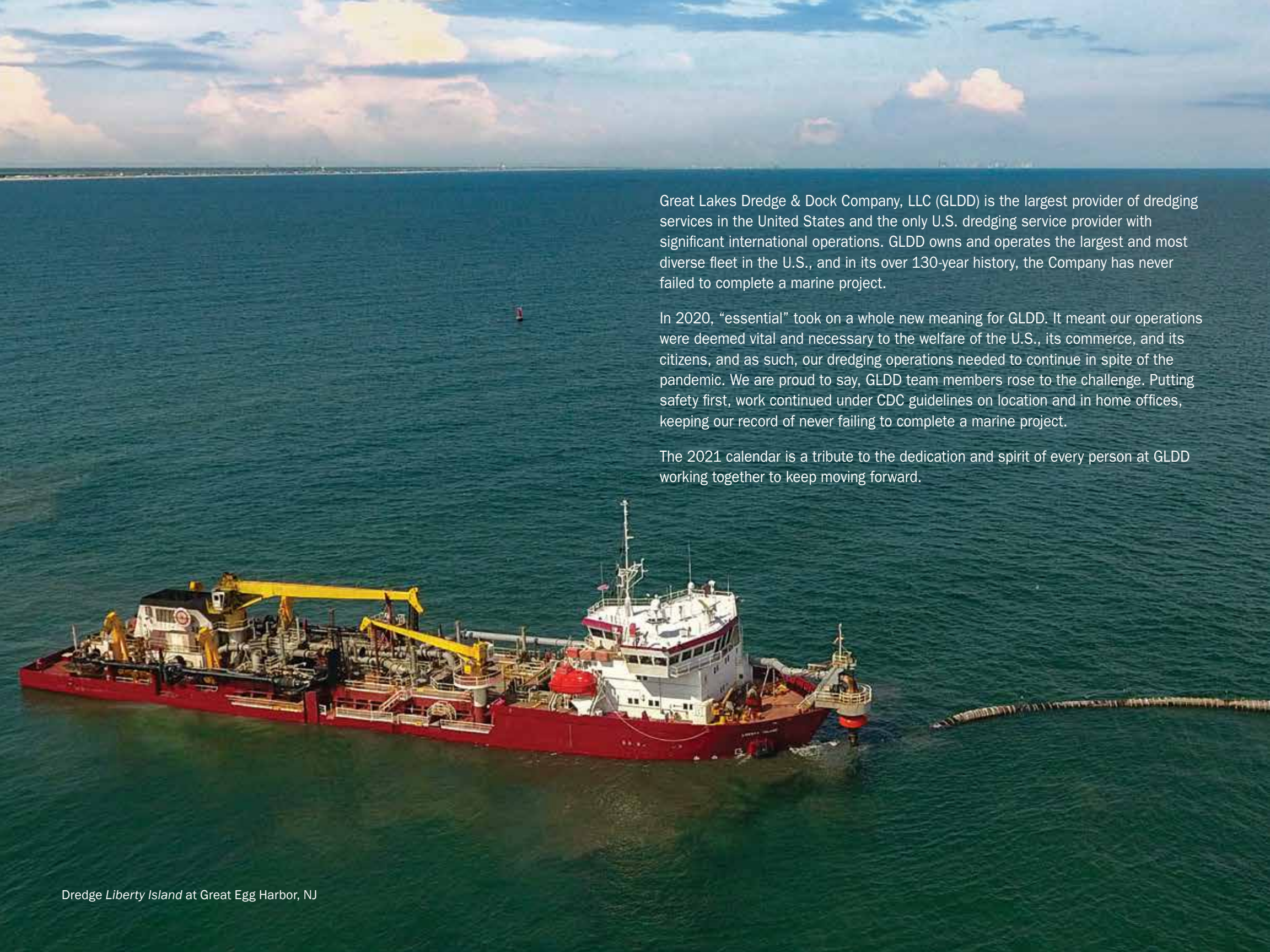
Team members of the Spider Barge 175-185 and Derrick 1700 at Charleston Harbor Deepening



Senior Site Manager, Ed O'Dowd



The crew at Cape Girardeau, MO celebrating 4 years IIF® free



Great Lakes Dredge & Dock Company, LLC (GLDD) is the largest provider of dredging services in the United States and the only U.S. dredging service provider with significant international operations. GLDD owns and operates the largest and most diverse fleet in the U.S., and in its over 130-year history, the Company has never failed to complete a marine project.

In 2020, “essential” took on a whole new meaning for GLDD. It meant our operations were deemed vital and necessary to the welfare of the U.S., its commerce, and its citizens, and as such, our dredging operations needed to continue in spite of the pandemic. We are proud to say, GLDD team members rose to the challenge. Putting safety first, work continued under CDC guidelines on location and in home offices, keeping our record of never failing to complete a marine project.

The 2021 calendar is a tribute to the dedication and spirit of every person at GLDD working together to keep moving forward.



DECEMBER 2020

above: Beach pump out at Charlotte County, Florida.

SUNDAY	MONDAY	TUESDAY	WEDNESDAY	THURSDAY	FRIDAY	SATURDAY
29  Scan for GLDD News	30	1	2	3	4	5
6	7 Pearl Harbor Remembrance Day	8	9	10 Hanukkah Begins	11	12
13	14	15	16 National Day (Bahrain)	17	18 Hanukkah Ends National Day (Qatar)	19
20	21 Winter Begins	22	23	24 Christmas Eve	25 Christmas Day	26 Kwanzaa Begins Boxing Day (Canada)
27	28	29	30	31 New Year's Eve	1	2

NOVEMBER 2020							JANUARY 2021						
S	M	T	W	T	F	S	S	M	T	W	T	F	S
1	2	3	4	5	6	7						1	2
8	9	10	11	12	13	14	3	4	5	6	7	8	9
15	16	17	18	19	20	21	10	11	12	13	14	15	16
22	23	24	25	26	27	28	17	18	19	20	21	22	23
29	30						24	25	26	27	28	29	30
							31						

Thank You

GLDD thanks these leaders for their dedicated service, commitment to our projects and business excellence, and steadfast engagement with the dredging community. We wish them well in their retirement.



Annette Cyr



Kyle Johnson



John Karas



Steve O'Hara



**GREAT LAKES
DREDGE & DOCK
COMPANY, LLC**





JANUARY 2021

above: Dredge No. 58 deepening the St. John's River in Jacksonville, Florida.

SUNDAY	MONDAY	TUESDAY	WEDNESDAY	THURSDAY	FRIDAY	SATURDAY
27  Scan for GLDD News	28	29	30	31	1 New Year's Day Kwanzaa Ends	2
3	4	5	6	7	8	9
10	11	12	13	14	15	16
17	18 Martin Luther King Jr. Day	19	20	21	22	23
24	25	26	27	28	29	30
31 Australia Day						

DECEMBER 2020							FEBRUARY 2021						
S	M	T	W	T	F	S	S	M	T	W	T	F	S
		1	3	3	4	5		1	2	3	4	5	6
6	7	8	9	10	11	12	7	8	9	10	11	12	13
13	14	15	16	17	18	19	14	15	16	17	18	19	20
20	21	22	23	24	25	26	21	22	23	24	25	26	27
27	28	29	30	31			28						

Moving Forward

In Q4 2020, GLDD established regional offices for Operations Personnel in Houston, TX, Staten Island, NY, and Jacksonville, FL, and relocated its Business Operations Support Center to Oakbrook Terrace, IL. In Q1 of 2021, GLDD's Corporate Leadership and additional Operations Personnel will move into new Headquarters in Houston, TX.



Regional Offices, clockwise from top left: Parkview Plaza, Oakbrook Terrace; Northeast Office, NY (Steve O'hara and Mark Reid); Southeast Office, FL; Gulf Office, TX (Dave Johanson and Chris Ameika)



**GREAT LAKES
DREDGE & DOCK
COMPANY, LLC**



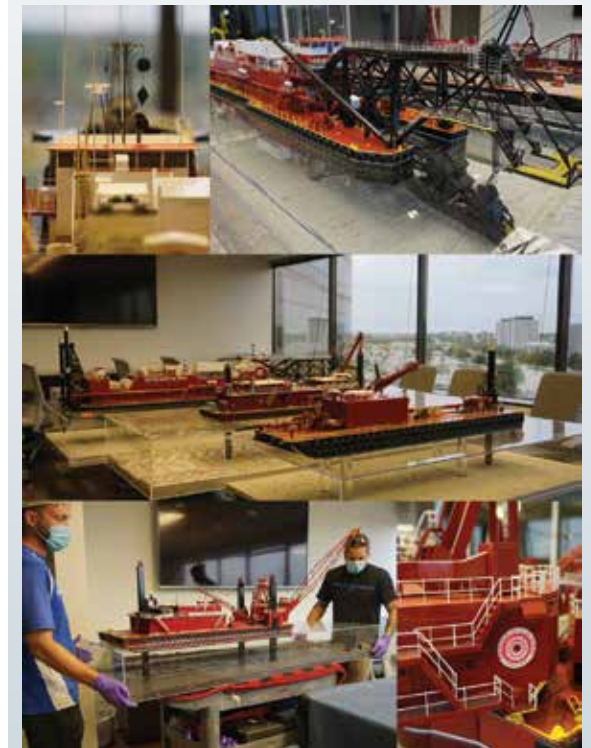


FEBRUARY 2021

above: The Dredge *Ellis Island* offshore pumping to the beach at Emerald Isle, NC. photo: Brad Styron

SUNDAY	MONDAY	TUESDAY	WEDNESDAY	THURSDAY	FRIDAY	SATURDAY
31  Scan for GLDD News	1	2	3	4	5	6
7	8	9	10	11	12 Lincoln's Birthday Chinese New Year	13
14 Valentine's Day	15 Presidents Day	16	17	18	19	20
21	22 Washington's Birthday	23	24	25	26	27
28	1	2	3	4	5	6

JANUARY 2021							MARCH 2021						
S	M	T	W	T	F	S	S	M	T	W	T	F	S
					1	2		1	2	3	4	5	6
3	4	5	6	7	8	9	7	8	9	10	11	12	13
10	11	12	13	14	15	16	14	15	16	17	18	19	20
17	18	19	20	21	22	23	21	22	23	24	25	26	27
24	25	26	27	28	29	30	28	29	30	31			
31													



A Model Move

GLDD's dredge models were carefully moved by professional movers in an air-suspended truck used for moving museum models. The move necessitated removing the models from their pedestals, allowing a rare glimpse of the models without their cases. After refurbishment, the models will be on display in our Houston and Parkview offices.



**GREAT LAKES
DREDGE & DOCK
COMPANY, LLC**





MARCH 2021

above: The Dredge Texas with Spider Barge 175 in the distance dredging the Charleston Entrance Channel.

SUNDAY	MONDAY	TUESDAY	WEDNESDAY	THURSDAY	FRIDAY	SATURDAY
31  Scan for GLDD News	1	2	3	4	5	6
7 Begin Daylight Saving Time	8	9	10	11	12	13
14	15	16	17 St. Patrick's Day	18	19	20 Spring Begins
21	22	23	24	25	26	27
28	29	30	31	1	2	3

FEBRUARY 2021							APRIL 2021						
S	M	T	W	T	F	S	S	M	T	W	T	F	S
	1	2	3	4	5	6							
7	8	9	10	11	12	13	4	5	6	7	8	9	10
14	15	16	17	18	19	20	11	12	13	14	15	16	17
21	22	23	24	25	26	27	18	19	20	21	22	23	24
28							25	26	27	28	29	30	

Moving Forward



GLDD has contracted for the building of two new Multicat vessels to assist in dredging operations and greatly increase the level of safety for our crews.



Also contracted in 2020, a new 6,500-cubic-yard-capacity Trailing Suction Hopper Dredge. Expected delivery is the first quarter of 2023.



**GREAT LAKES
DREDGE & DOCK
COMPANY, LLC**





APRIL 2021

above: Caminada Headland Back Barrier Marsh was created along the Louisiana coastline to nourish around 900 acres of wetlands degraded by subsidence and hurricanes.

SUNDAY	MONDAY	TUESDAY	WEDNESDAY	THURSDAY	FRIDAY	SATURDAY
28  Scan for GLDD News	29	30	31	1	2 Good Friday	3
4 Easter Passover Ends	5	6	7	8	9	10
11	12	13 Ramadan Begins	14	15 Passover Ends Tax Day	16	17
18	19	20	21	22 Earth Day	23	24
25	26	27	28	29	30	1

MARCH 2021							MAY 2021						
S	M	T	W	T	F	S	S	M	T	W	T	F	S
	1	2	3	4	5	6	2	3	4	5	6	7	8
7	8	9	10	11	12	13	9	10	11	12	13	14	15
14	15	16	17	18	19	20	16	17	18	19	20	21	22
21	22	23	24	25	26	27	23	24	25	26	27	28	29
28	29	30	31				30	31					



Cutterhead of the Dredge Carolina

Powered by the Carolina's 3000 HP cutter motors, the Vosta 5-arm T-4 cutterhead is designed to loosen and dislodge sand and clay so the slurry can be drawn into its suction pipe. An impressive 7.9 feet (2.41m) tall and 9.1 feet (2.765m) in diameter, it has 43 chisel teeth spinning at 30 revolutions per minute. These teeth require replacement an average of every 4-6 hours, and each one can be changed in about 15 seconds thanks to an innovative hammerless tooth change system.
photo: James Dayton



**GREAT LAKES
DREDGE & DOCK
COMPANY, LLC**





MAY 2021

above: Dredge *Ohio* load out in Bahrain on a semisubmersible transport vessel in preparation for its return to the U.S.

SUNDAY	MONDAY	TUESDAY	WEDNESDAY	THURSDAY	FRIDAY	SATURDAY
25  Scan for GLDD News	26	27	28	29	30	1
2	3	4	5	6	7	8
S A F E T Y W E E K Cinco de Mayo						
9 Mother's Day	10	11	12 Ramadan Ends	13	14	15
16	17	18	19	20	21	22 National Maritime Day
23	24	25	26	27	28	29
30	31 Memorial Day					

APRIL 2021							JUNE 2021						
S	M	T	W	T	F	S	S	M	T	W	T	F	S
				1	2	3			1	2	3	4	5
4	5	6	7	8	9	10	6	7	8	9	10	11	12
11	12	13	14	15	16	17	13	14	15	16	17	18	19
18	19	20	21	22	23	24	20	21	22	23	24	25	26
25	26	27	28	29	30		27	28	29	30			

SAFETY MILESTONES



In July 2020, the Yard Crew at Cape Girardeau, MO celebrate an amazing accomplishment of 4 years Incident and Injury Free® (IIF®).



In September 2020, the Dredge Ohio crews accomplished an incredible record of 10 years without a lost time incident.



**GREAT LAKES
DREDGE & DOCK
COMPANY, LLC**





JUNE 2021

above: MSCIP (Mississippi Coastal Improvements Program)
Beach nourishment, Phase III off Gulfport / Biloxi Mississippi.

SUNDAY	MONDAY	TUESDAY	WEDNESDAY	THURSDAY	FRIDAY	SATURDAY
30  Scan for GLDD News	31	1	2	3	4	5
6	7	8	9	10	11	12
13	14 Flag Day	15	16	17	18	19
20 Father's Day Summer Begins	21	22	23	24	25	26
27	28	29	30	1	2	3

MAY 2021							JULY 2021						
S	M	T	W	T	F	S	S	M	T	W	T	F	S
2	3	4	5	6	7	8	1	4	5	6	7	8	9
9	10	11	12	13	14	15	11	12	13	14	15	16	17
16	17	18	19	20	21	22	18	19	20	21	22	23	24
23	24	25	26	27	28	29	25	26	27	28	29	30	31
30	31												

HELPING OUT



While on location with a project in Charleston Harbor, SC, GLDD was able to lend a helping hand to a local environmental organization led by veterans, "Wounded Nature," to raise a derelict sailboat. After being raised, GLDD transported the boat to our yard where it was then loaded on a truck for disposal.



**GREAT LAKES
DREDGE & DOCK
COMPANY, LLC**





JULY 2021

above: The Dredge *Iowa* in Vicksburg, MS.

SUNDAY	MONDAY	TUESDAY	WEDNESDAY	THURSDAY	FRIDAY	SATURDAY
27  Scan for GLDD News	28	29	30	1 Canada Day	2	3
4 Independence Day	5	6	7	8	9	10
11	12	13	14	15	16	17
18	19	20	21	22	23	24
25	26	27	28	29	30	31

JUNE 2021							AUGUST 2021						
S	M	T	W	T	F	S	S	M	T	W	T	F	S
		1	2	3	4	5	1	2	3	4	5	6	7
6	7	8	9	10	11	12	8	9	10	11	12	13	14
13	14	15	16	17	18	19	15	16	17	18	19	20	21
20	21	22	23	24	25	26	22	23	24	25	26	27	28
27	28	29	30				29	31	31				



Recognizing the impactful work The Florida Aquarium was doing to save coral reefs, GLDD made a multi-year investment in 2019 in the Aquarium's important coral conservation work by underwriting several coral scientists and their associated operating expenses. In 2020, due to COVID-19 impacts, the Aquarium faced some unforeseen challenges that could have impacted the expansion of its coral complex located at the Center for Conservation. Understanding that The Florida Aquarium's development of innovative coral solutions is vital to the health of our oceans and environment, GLDD increased their financial commitment to the Aquarium to ensure this important expansion continued to move forward.



**GREAT LAKES
DREDGE & DOCK
COMPANY, LLC**





AUGUST 2021

above: The Dredge *Illinois* dredging at Shinnecock, NY for beach nourishment. photo: Mike Busch, Great South Bay Images

SUNDAY	MONDAY	TUESDAY	WEDNESDAY	THURSDAY	FRIDAY	SATURDAY
1  Scan for GLDD News	2	3	4 U.S. Coast Guard Day	5	6	7
8	9 Islamic New Year	10	11	12	13	14
15	16	17	18	19	20	21
22	23	24	25	26	27	28
29	30	31	1	2	3	4

JULY 2021							SEPTEMBER 2021						
S	M	T	W	T	F	S	S	M	T	W	T	F	S
				1	2	3							
4	5	6	7	8	9	10	5	6	7	8	9	10	11
11	12	13	14	15	16	17	12	13	14	15	16	17	18
18	19	20	21	22	23	24	19	20	21	22	23	24	25
25	26	27	28	29	30	31	26	27	28	29	30		



Vital to every project, GLDD's support vessels and their crews keep our projects going. Depending on the project, support vessels can include tugs, barges, boosters, drillboats, survey boats, scows, and unloaders.

(photos above are vessels used during the Shinnecock, NY project, taken by Mike Busch, Great South Bay Images)



**GREAT LAKES
DREDGE & DOCK
COMPANY, LLC**





SEPTEMBER 2021

above: Unloader #2 at Poplar Island, Chesapeake Bay, MD.

SUNDAY	MONDAY	TUESDAY	WEDNESDAY	THURSDAY	FRIDAY	SATURDAY
29  Scan for GLDD News	30	31	1	2	3	4
5	6 Labor Day	7	8	9	10	11
12	13	14	15	16	17 Rosh Hashanah Begins	18
19 Rosh Hashanah Ends	20 Sukkot Begins International Day of Peace	21 Autumn Begins	22	23	24	25
26 Yom Kippur	27 Sukkot Ends	28	29	30	1	2

AUGUST 2021							OCTOBER 2021						
S	M	T	W	T	F	S	S	M	T	W	T	F	S
1	2	3	4	5	6	7							
8	9	10	11	12	13	14	3	4	5	6	7	8	9
15	16	17	18	19	20	21	10	11	12	13	14	15	16
22	23	24	25	26	27	28	17	18	19	20	21	22	23
29	30	31					24	25	26	27	28	29	30
							31						



Maintaining the ships that maintain our waterways

GLDD vessels routinely go to dry dock to undergo upgrades, repairs, and a new coat of paint. Above, the Tug Douglas B. Mackie and Dredge Ellis Island are being made ready to return to work at optimal safety and efficiency – and looking good!



**GREAT LAKES
DREDGE & DOCK
COMPANY, LLC**





OCTOBER 2021

above: Backhoe Dredge New York deepening the St. John's River in Jacksonville, Florida, with clamshell Dredges #53 and #54 in the distance.

SUNDAY	MONDAY	TUESDAY	WEDNESDAY	THURSDAY	FRIDAY	SATURDAY
26  Scan for GLDD News	27	28	29	30	1	2
3	4	5	6	7	8	9
10	11 Columbus Day Indigenous Peoples Day	12	13	14	15	16
17	18	19	20	21	22	23
24	25	26	27	28	29	30
31 Halloween						

SEPTEMBER 2021							NOVEMBER 2021						
S	M	T	W	T	F	S	S	M	T	W	T	F	S
			1	2	3	4		1	2	3	4	5	6
5	6	7	8	9	10	11	7	8	9	10	11	12	13
12	13	14	15	16	17	18	14	15	16	17	18	19	20
19	20	21	22	23	24	25	21	22	23	24	25	26	27
26	27	28	29	30			28	29	30				



It has been a long-standing tradition for GLDD-ers to come together to support cancer research and promote Breast Cancer Awareness Month (BCAM), and we continued with this tradition in 2020. To honor survivors and all those touched by the disease, GLDD-ers were encouraged to wear pink during October, and many participated in local BCAM initiatives and fundraising efforts.



**GREAT LAKES
DREDGE & DOCK
COMPANY, LLC**





NOVEMBER 2021

above: Beach nourishment work at Shinnecock Beach, NY.

SUNDAY	MONDAY	TUESDAY	WEDNESDAY	THURSDAY	FRIDAY	SATURDAY
31  Scan for GLDD News	1 All Saints' Day	2 Election Day All Souls' Day	3	4	5	6
7 Daylight Saving Time Ends	8	9	10	11 Veterans Day	12	13
14	15	16	17	18	19	20
21	22	23	24	25	26	27
28 Hanukkah Begins	29	30	1	2	3	4

OCTOBER 2021							DECEMBER 2021						
S	M	T	W	T	F	S	S	M	T	W	T	F	S
					1	2				1	2	3	4
3	4	5	6	7	8	9	5	6	7	8	9	10	11
10	11	12	13	14	15	16	12	13	14	15	16	17	18
17	18	19	20	21	22	23	19	20	21	22	23	24	25
24	25	26	27	28	29	30	26	27	28	29	30	31	



GLDD is a proud sponsor of the Loggerhead Marinelife Center in Juno Beach, FL. The Marinelife Center has partnered with GLDD on jobsites to ensure the safety of nesting loggerhead turtles. In 2020, GLDD's James Towner (l) presented a donation to Justin Perrault, PhD, Director of Research of the Loggerhead Marinelife Center.



**GREAT LAKES
DREDGE & DOCK
COMPANY, LLC**





DECEMBER 2021

above: The Cutter Suction Dredge *Alaska* at the Sabine Pass LNG Terminal, Sabine Pass River, Louisiana. *photo: Davis Eriksmoen*

SUNDAY	MONDAY	TUESDAY	WEDNESDAY	THURSDAY	FRIDAY	SATURDAY
28  Scan for GLDD News	29	30	1	2	3	4
5	6 Pearl Harbor Remembrance Day Hanukkah Ends	7	8	9	10	11
12	13	14	15	16 National Day (Bahrain)	17	18 National Day (Qatar)
19	20	21 Winter Begins	22	23	24 Christmas Eve	25 Christmas Day
26 Boxing Day (Canada) Kwanzaa Begins	27	28	29	30	31 New Year's Eve	1

NOVEMBER 2021							JANUARY 2022						
S	M	T	W	T	F	S	S	M	T	W	T	F	S
	1	2	3	4	5	6	2	3	4	5	6	7	8
7	8	9	10	11	12	13	9	10	11	12	13	14	15
13	14	15	16	17	18	19	16	17	18	19	20	21	22
20	21	22	23	24	25	26	23	24	25	26	27	28	29
27	28	29	30				30	31					



The beach nourishment work that GLDD performs plays a vital role in storm protection of our coasts. In August 2020, this sea oat planting was watered, fertilized, and placed into the sand at GLDD's Emerald Isle Beach Nourishment Project in Carteret County, North Carolina. The photos show dune crest sea oats that are on their way to maturity.



**GREAT LAKES
DREDGE & DOCK
COMPANY, LLC**





JANUARY 2022

above: Dredge 54 dredging, with Scow 602 and Dredge 55 in the distance at Baltimore Harbor, MD.

SUNDAY	MONDAY	TUESDAY	WEDNESDAY	THURSDAY	FRIDAY	SATURDAY
26  Scan for GLDD News	27	28	29	30	31	1 New Year's Day Kwanzaa Ends
2	3	4	5	6	7	8
9	10	11	12	13	14	15
16	17 Martin Luther King Jr. Day	18	19	20	21	22
23	24	25	26	27	28	29
30	31	Australia Day				

DECEMBER 2021							FEBRUARY 2022						
S	M	T	W	T	F	S	S	M	T	W	T	F	S
			1	2	3	4							
5	6	7	8	9	10	11	6	7	8	9	10	11	12
12	13	14	15	16	17	18	13	14	15	16	17	18	19
19	20	21	22	23	24	25	20	21	22	23	24	25	26
26	27	28	29	30	31		27	28					

BEFORE and AFTER



Pre and post coastal protection work on the Jersey Shore.



**GREAT LAKES
DREDGE & DOCK
COMPANY, LLC**



CUTTER SUCTION DREDGES



TEXAS

30 in (762 mm) Discharge Diameter | 15,771 hp (11,765 kW) Total Installed Power



CAROLINA

30 in (762 mm) Discharge Diameter | 15,325 hp (11,432 kW) Total Installed Power



OHIO

30 in (762 mm) Discharge Diameter | 15,670 hp (11,690 kW) Total Installed Power



ILLINOIS

30 in (762 mm) Discharge Diameter | 11,300 hp (8,430 kW) Total Installed Power



ALASKA

30 in (762 mm) Discharge Diameter | 11,200 hp (8,355 kW) Total Installed Power

TRAILING SUCTION HOPPER DREDGES



ELLIS ISLAND

14,800 yd³ (11,315 m³) Capacity | 28,625 hp (21,346 kW) Total Installed Power
Bottom Dump/Pump-Out Disposal



DODGE ISLAND

3,600 yd³ (2,752 m³) Capacity | 10,695 hp (7,978 kW) Total Installed Power
Split-Hull Dump/Pump-Out Disposal



PADRE ISLAND

3600 yd³ (2,752 m³) Capacity | 9,895 hp (7,382 kW) Total Installed Power
Split-Hull Dump/Pump-Out Disposal

LIBERTY ISLAND

6,540 yd³ (5,000 m³) Capacity | 15,566 hp (11,612 kW) Total Installed Power
Bottom Dump/Pump-Out Disposal



TERRAPIN ISLAND

6,272 yd³ (4,795 m³) Capacity | 16,850 hp (12,570 kW) Total Installed Power
Split-Hull Dump/Pump-Out Disposal



New 6500 cubic yard Trailing Suction Hopper Dredge under construction Anticipated delivery Q1 2023



MECHANICAL DREDGES



NEW YORK

Up to 25 yd³ (19 m³) Bucket Capacity | 3,818 hp (2,848 kW) Total Installed Power



DREDGE NO. 53

Up to 40 yd³ (30 m³) Bucket Capacity | 2,250 hp (1,679 kW) Total Installed Power



DREDGE NO. 54

Up to 50 yd³ (38 m³) Bucket Capacity | 2,340 hp (1,746 kW) Total Installed Power



DREDGE NO. 58

Up to 50 yd³ (38 m³) Bucket Capacity | 3,000 hp (2,237 kW) Total Installed Power



DREDGE NO. 55

Up to 40 yd³ (31 m³) Bucket Capacity | 1,745 hp (1,302 kW) Total Installed Power

SUPPORT EQUIPMENT

WORKBOATS

Twenty Boats (Lake Tahoe shown) | 460 hp (343 kW) to 1,200 hp (895 kW)



TUG FLEET

Six Tugboats (McCormack Boys shown)
800 hp (597 kW) to 3,000 hp (2,238 kW)



SURVEY FLEET

Twenty-nine Boats (Calcasieu River shown)
230 hp (172 kW) to 1,170 hp (873 kW)

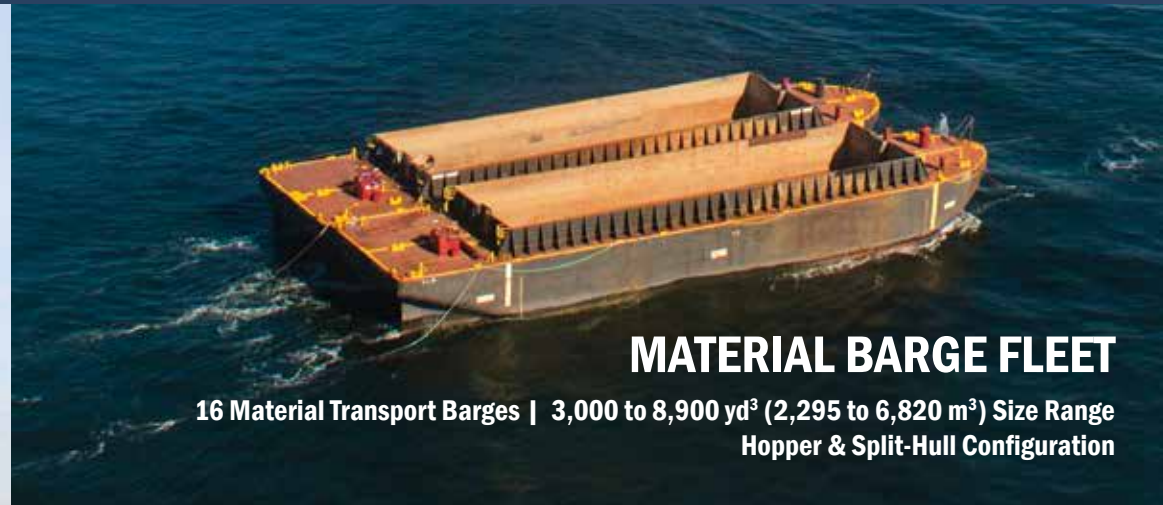


AUXILIARY FLEET



DRILLBOAT APACHE

Three 90 ft (27 m) Towers | Hydraulic Percussion Drills; Emulsion or Stick Explosives



MATERIAL BARGE FLEET

16 Material Transport Barges | 3,000 to 8,900 yd³ (2,295 to 6,820 m³) Size Range
Hopper & Split-Hull Configuration



SPIDER BARGE 175

30 in (762 mm) Discharge Diameter | Three/Side Six-Arm Arrangement



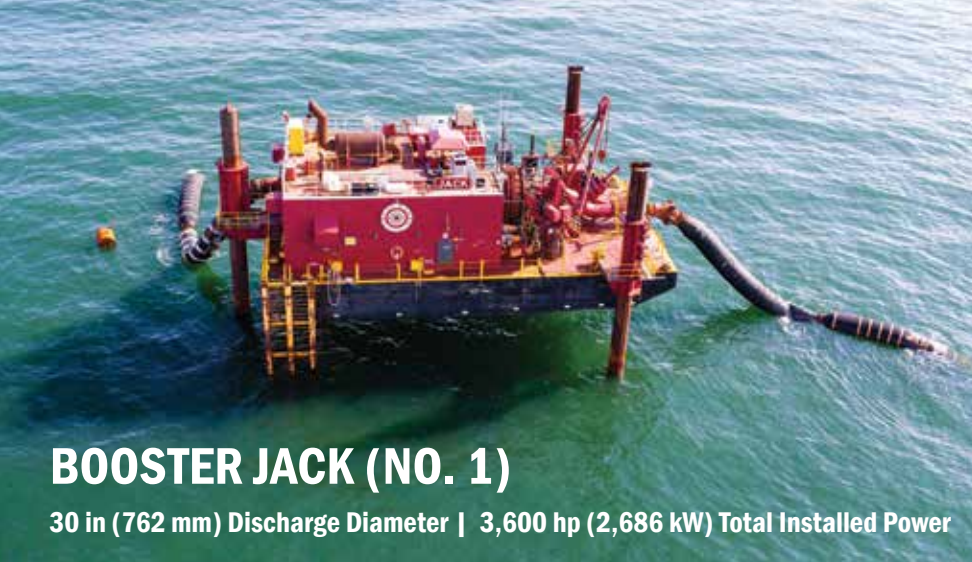
UNLOADER NO. 2

24 in (610 mm) Discharge Diameter | 6,800 hp (5,073 kW) Total Installed Power



SPIDER BARGE 185

30 in (762 mm) Discharge Diameter | Two/Side Four-Arm Arrangement



BOOSTER JACK (NO. 1)

30 in (762 mm) Discharge Diameter | 3,600 hp (2,686 kW) Total Installed Power



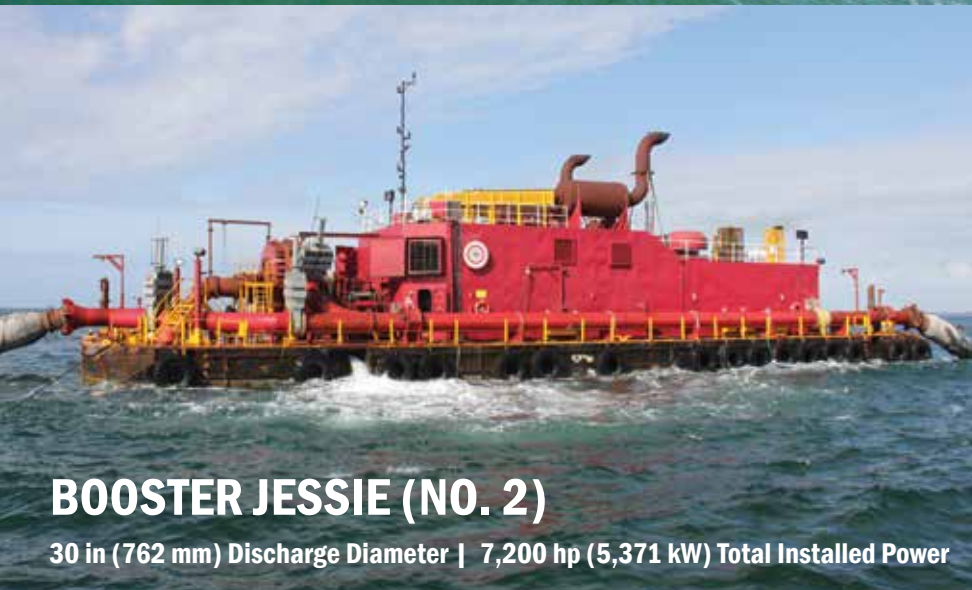
BOOSTER CAPTAIN BARNEY

30 in (762 mm) Discharge Diameter
3,600 hp (2,686 kW) Total Installed Power



BOOSTER ERIN (NO. 5)

30 in (762 mm) Discharge Diameter
3,600 hp (2,686 kW) Total Installed Power



BOOSTER JESSIE (NO. 2)

30 in (762 mm) Discharge Diameter | 7,200 hp (5,371 kW) Total Installed Power



BOOSTER BUSTER (NO. 6)

30 in (762 mm) Discharge Diameter
14,400 hp (10,742 kW) Total Installed Power



BOOSTER TEXAS JR. (NO. 7)

30 in (762 mm) Discharge Diameter
3,900 hp (2,909 kW) Total Installed Power



BOOSTER REGGIE (NO. 4)

30 in (762 mm) Discharge Diameter | 3,600 hp (2,686 kW) Total Installed Power



BOOSTER NO. 9

30 in (762 mm) Discharge Diameter | 3,600 hp (2,686 kW) Total Installed Power

RIVERS & LAKES DREDGES

LP

DISCHARGE DIAMETER 22 IN



IOWA

Discharge Diameter 24 in



SANDPIPER

Discharge Diameter 20 in



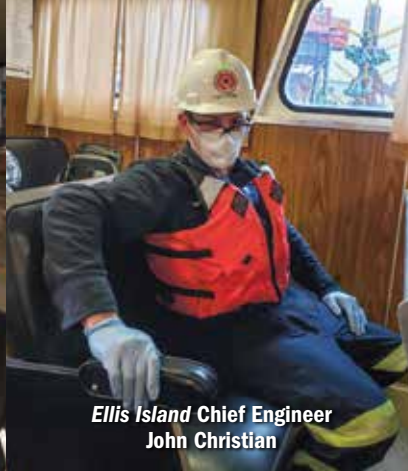
OUR PEOPLE... OUR PRIDE



Rich Schlecker
working from home with his assistant



Diane Parenti
and her son



Ellis Island Chief Engineer
John Christian



Mike Lueders' stress relief



Audri Tarr made masks to donate



Cookies for
the crews made by
Marcia Jevnisek



Annette Cyr
in Jacksonville, WY



Kenny Jackson
Jacksonville Fill Site Operator



Nilene Brunslis's family art



Jennifer Beitzel in her home office



Ali Keener at
Toys for Tots Fundraiser



GLDD's Board of Directors and Executive Leadership Team on the Ellis Island



Norma Alberts working from home



2020 Fall Safety Challenge recognition at Sabine Pass

PROJECTS

Charlotte County, FL pipeline demobilization

photo: Mike Gerlach



Beach nourishment at Great Egg Harbor, Peck Beach, NJ



Dredge 58 at St. Johns River, FL



Ship Island, MS



PROJECTS

Dredge *Carolina* at dawn in Corpus Christi, TX

photo: Mike Gerlach



***Spider Barge 175* with the Dredge *Texas* in the distance at Charleston, SC**



Dredge *54* and scow at Port Jersey, NJ with the Manhattan skyline in the distance



Dredge *Texas* and Dredge *58* Jacksonville, FL Harbor Deepening B



GLDD practices effective environmental, safety, social and governance processes in everything we do. Our business is focused on ensuring that our nation's shorelines are protected and potential risks associated with storms and sea change are mitigated. Our people seek and develop technical innovations so that our work can be completed efficiently and responsibly, and we are committed to executing all projects with robust environmental and safety standards. To learn more about our ESG initiatives, visit gldd.com/ESG

GLDD practices effective environmental, safety, social and governance processes in everything we do. Our business is focused on ensuring that our nation's shorelines are protected and potential risks associated with storms and sea change are mitigated. Our people seek and develop technical innovations so that our work can be completed efficiently and responsibly, and we are committed to executing all projects with robust environmental and safety standards. To learn more about our ESG initiatives, visit gldd.com/ESG

[illegible]

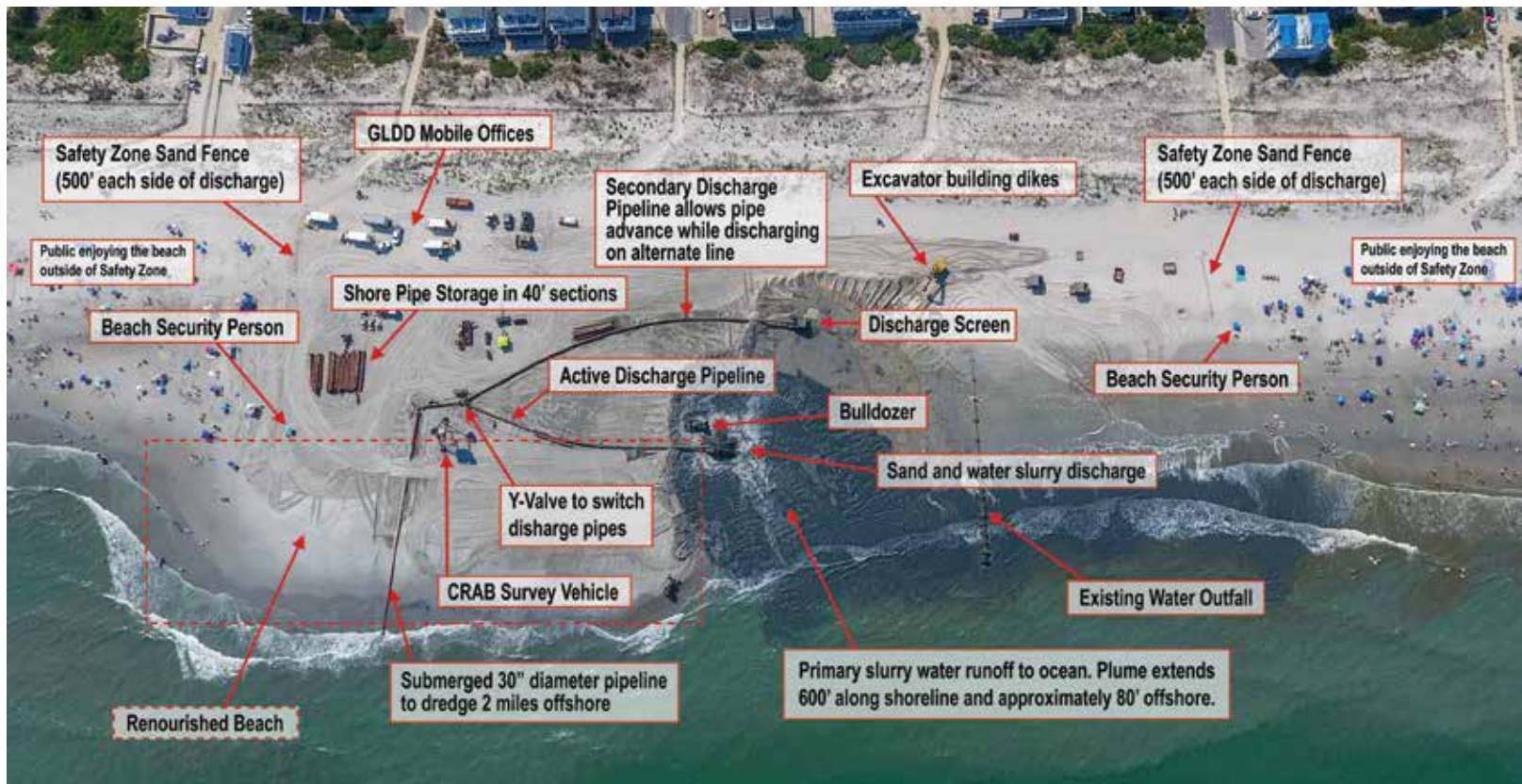
JANUARY 2022							FEBRUARY 2022							MARCH 2022							APRIL 2022							MAY 2022							JUNE 2022											
S	M	T	W	T	F	S	S	M	T	W	T	F	S	S	M	T	W	T	F	S	S	M	T	W	T	F	S	S	M	T	W	T	F	S												
						1							1	2	3	4	5							1	2						1	2	3	4	5	6	7									
2	3	4	5	6	7	8	6	7	8	9	10	11	12	6	7	8	9	10	11	12	3	4	5	6	7	8	9	8	9	10	11	12	13	14	5	6	7	8	9	10	11					
9	10	11	12	13	14	15	13	14	15	16	17	18	19	13	14	15	16	17	18	19	10	11	12	13	14	15	16	15	16	17	18	19	20	21	12	13	14	15	16	17	18					
16	17	18	19	20	21	22	20	21	22	23	24	25	26	20	21	22	23	24	25	26	17	18	19	20	21	22	23	22	23	24	25	26	27	28	19	20	21	22	23	24	25					
23	24	25	26	27	28	29	27	28						27	28	29	30	31						24	25	26	27	28	29	30	29	30	31						26	27	28	29	30			
30	31																																													
JULY 2022							AUGUST 2022							SEPTEMBER 2022							OCTOBER 2022							NOVEMBER 2022							DECEMBER 2022											
S	M	T	W	T	F	S	S	M	T	W	T	F	S	S	M	T	W	T	F	S	S	M	T	W	T	F	S	S	M	T	W	T	F	S	S	M	T	W	T	F	S					
						1	2							1	2	3							1							1	2	3	4	5						1	2	3				
3	4	5	6	7	8	9	7	8	9	10	11	12	13	4	5	6	7	8	9	10	2	3	4	5	6	7	8	6	7	8	9	10	11	12	4	5	6	7	8	9	10					
10	11	12	13	14	15	16	14	15	16	17	18	19	20	11	12	13	14	15	16	17	9	10	11	12	13	14	15	13	14	15	16	17	18	19	11	12	13	14	15	16	17					
17	18	19	20	21	22	23	21	22	23	24	25	26	27	18	19	20	21	22	23	24	16	17	18	19	20	21	22	20	21	22	23	24	25	26	18	19	20	21	22	23	24					
24	25	26	27	28	29	30	28	29	30	31						25	26	27	28	29	30	23	24	25	26	27	28	29	27	28	29	30						25	26	27	28	29	30	31		
31																					30	31																								

[illegible]

Anatomy of a Beach Nourishment in Progress

An annotated overview of the beach nourishment at Sea Isle City, NJ as the Dredge *Liberty Island* pumps to the shore at 83rd Street.

21 July, 2020 at 4:00 pm
photo: Emily Iseley



Scan this QR code to see the GLDD 2021 calendar as a flip book online.



GREAT LAKES DREDGE & DOCK COMPANY, LLC

Established 1890 www.GLDD.com NASDAQ: GLDD
Committed to creating an incident & injury free (IIF®) working environment
Registered to do business worldwide
Certified ISO 9001:2000 for international operations
An Equal Opportunity Employer

FINANCIAL AND SUPPORT OFFICES

1 Parkview Plaza, Suite 800
Oakbrook Terrace, IL 60181
630.574.3000 | info@gldd.com

COMPLIANCE LINE

1.888.579.1670
gldd.mycompliancereport.com

INVESTOR RELATIONS

Tina Baginskis
630.574.3024

CAREERS

careers@gldd.com
www.gldd.com/careers

REGIONAL DREDGING OFFICES



NORTHEAST REGION

photo: Steve O'hara and Mark Reid
NortheastRegion@gldd.com
718.981.2700 800.792.0085 f 718.273.7352
2747 Richmond Terrace
Staten Island, NY 10303



SOUTHEAST REGION

SoutheastRegion@gldd.com
904.834.5234
10151 Deerwood Park Blvd., Building 300, Suite 115
Jacksonville, FL 32256



GULF REGION

photo: Dave Johanson and Chris Ameika
GulfRegion@gldd.com
346.271.7701 f 346.271.7703
Two Riverway, Suite 1130
Houston, TX 77056

MIDDLE EAST

MEinfo@gldd.com
011.973.17.471.929
MJ Tower, Office No. 32, 1st Floor
Building No. 870
Road No. 3618, Block 436
Seef District, Manama
Kingdom of Bahrain

YARD LOCATIONS

Staten Island, NY
Norfolk, VA
Morgan City, LA
Chickasaw, AL
Cape Girardeau, MO
Little Rock, AR



GREAT LAKES DREDGE & DOCK COMPANY
www.gldd.com



The Dredge *Ellis Island* on location at MSCIP